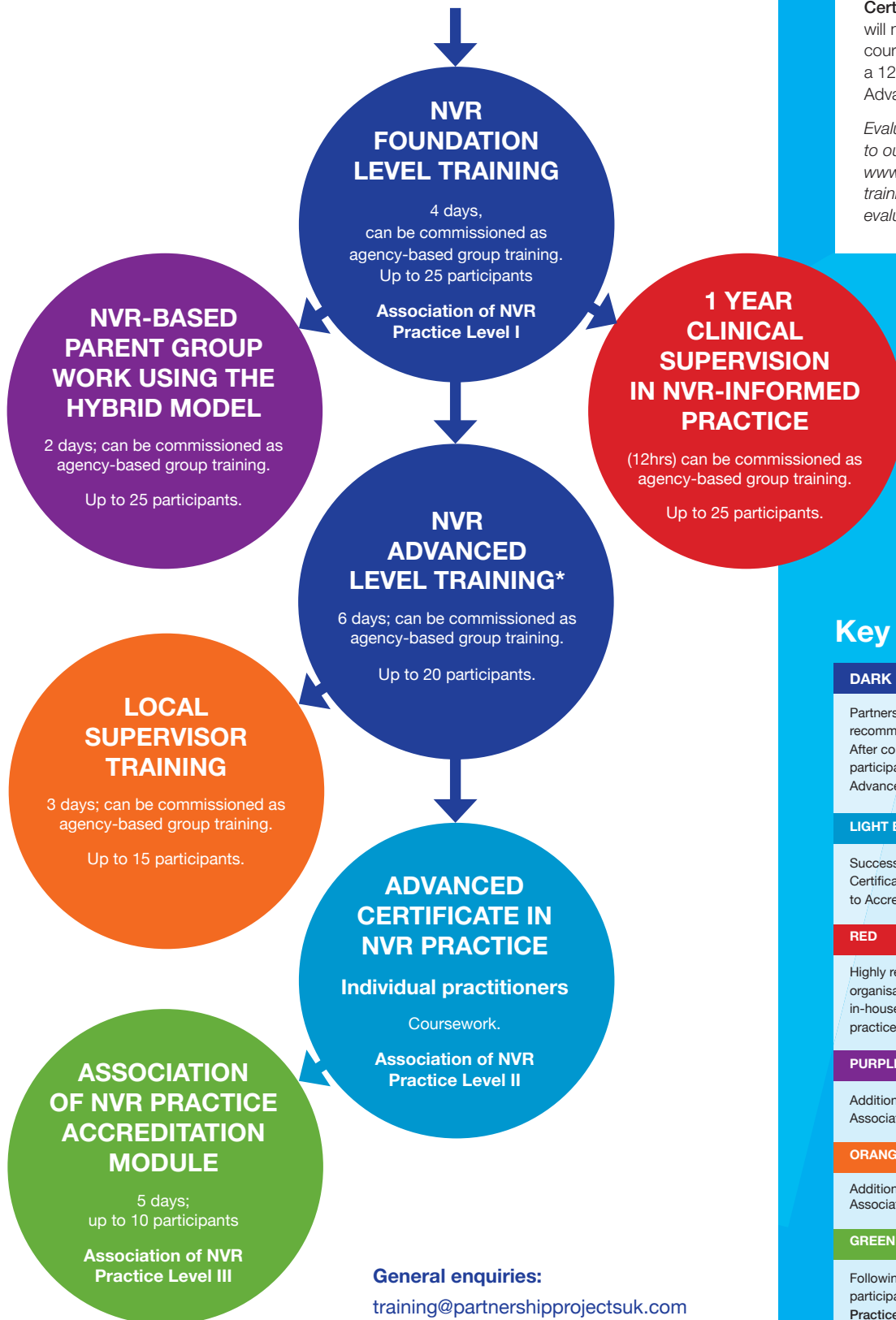


NVR Training Flow Chart

YOUR NVR JOURNEY STARTS HERE



***ADVANCED CERTIFICATE IN NVR PRACTICE - Evaluation & Certification:**

For participants who fully complete the Foundation Level & Advanced Level (10 days in total) and who then wish to go on to acquire the 'PartnershipProjects Advanced Certificate in NVR Practice' they will need to submit the required coursework for evaluation within a 12-month period from the last Advanced Level day (AL10).

Evaluation fees apply – please refer to our website for full details; www.partnershipprojectsuk.com/training-workshops/booking-evaluation-certification/

Key

DARK BLUE	PartnershipProjects Certificate Course and recommended agency based training program. After completion of Foundation Level, participants have up to 2 years to commence Advanced Level training.
LIGHT BLUE	Successful completion of Evaluation & Certification is required for progression to Accreditation Module.
RED	Highly recommended optional module, for organisations who do not have their own in-house clinical supervision in NVR-informed practice
PURPLE	Additional training module that is not related to Association of NVR Practice, qualification levels.
ORANGE	Additional training module that is not related to Association of NVR Practice qualification levels.
GREEN	Following successful completion of this module, participants will receive their Association of NVR Practice Accredited Practitioner certificate.

General enquiries:
training@partnershipprojectsuk.com
www.partnershipprojectsuk.com